



# PIRANHA COOLING LINE®

For extreme Cooling



**Passt auf alle gängigen Werkzeugträger und CNC Maschinen**  
Fits on all standard tool holders and CNC machines



**Ist flexibel – verstellbar ohne Werkzeuge**  
Is flexible – adjustable without tools



**Bis 80 Bar Hochdruck einsetzbar**  
Withstands pressures up to 80 bar



**Vielseitige Verwendung (kühlen, ausblasen, absaugen)**  
Versatile use (cooling, blowing out, suction)



**Variabel anwendbar und vielseitig kombinierbar**  
Variably applicable and versatile in combination



**Lange Lebensdauer durch Eloxalschicht**  
Long lifespan thanks to anodic coating



**Geringes Gewicht**  
Light weight



**Neues Design**  
New design



**100% Swiss Made**  
100% Swiss made

Die patentierte  
The patented

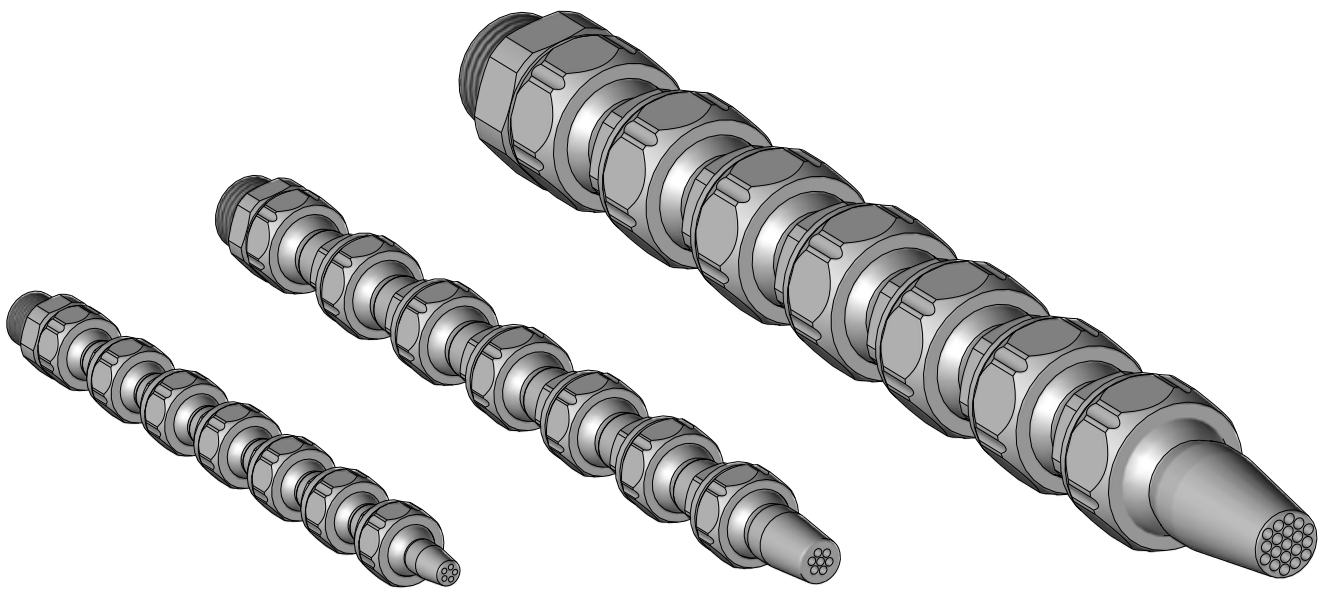
**PIRANHA  
COOLING LINE**

**löst alle Kühlprobleme  
bei der spanabhebenden  
Bearbeitung**  
solves all cooling problems  
on chip-removing processing

# Piranha Cooling Line

Die patentierte Piranha Cooling Line ist ein einzigartiges und vielseitiges Gelenkschlauchsystem zur präzisen Kühlmittel-, Öl- und Luftzufuhr. Aus hochfestem Aluminium gefertigt und eloxiert, hält es Drücke bis 80 bar stand, findet aber auch bei niedrigem Druck Anwendung, wo andere KSS-Leitungen frühzeitig verschleissen. Es lässt sich mit den erhältlichen Gewinde- bzw. Kugelanschlüssen auf allen gängigen Werkzeugträgern und CNC-Maschinen vorwiegend an Drehmaschinen, Fräsmaschinen, Schleifmaschinen, Sägemaschinen und Abfüllanlagen montieren. Neben der Kühl-Schmierstoffzufuhr eignet sich das Cooling Line-System ebenfalls zum Ausblasen von Spannfuttern und Werkstücken sowie zum Vorwärmen von Material beim 3D-Druck.

The Piranha Cooling Line is a unique and versatile jointed hose system for precise coolant supply. Made of high-strength anodized aluminium, it withstands pressures of up to 80 bar but can also be used at low pressures, where other cooling lubricant pipes wear prematurely. With our threaded connectors or ball connectors it can be installed on all common tool holders and CNC machines, mainly on turning machines, milling machines, grinding machines, sawing machines and filling plants. In addition to the cooling lubricant supply, the Cooling Line system is suitable for blowing out chucks or workpieces and for preheating material during 3D printing.



## 1/8" SYSTEM

Durchlass Ø 3,4 mm  
Passage Ø 3,4 mm

Anzugsmoment 2 – 3 Nm  
Clamping torque 2 – 3 Nm

Seite / page 3 – 5

## 1/4" SYSTEM

Durchlass Ø 5,5 mm  
Passage Ø 5,5 mm

Anzugsmoment 2,5 – 3 Nm  
Clamping torque 2,5 – 3 Nm

Seite / page 6 – 11

## 1/2" SYSTEM

Durchlass Ø 12,0 mm  
Passage Ø 12,0 mm

Anzugsmoment 5 – 7,5 Nm  
Clamping torque 5 – 7,5 Nm

Seite / page 12 – 15

FOR HIGH  
PRESSURE  
80 BAR

## Gewindeanschlüsse Threaded connector

### GA-9.5-1/8"

Gewindeanschluss 1/8" G  
Threaded connector 1/8" G



### GA-9.5-1/8" NPT

Gewindeanschluss 1/8" NPT  
Threaded connector 1/8" NPT



### GA-9.5-1/8" R

Gewindeanschluss 1/8" R  
Threaded connector 1/8" R



### GA-9.5-1/4" R

Gewindeanschluss 1/4" R  
Threaded connector 1/4" R



### GA-9.5-M8

Gewindeanschluss M8  
Threaded connector M8



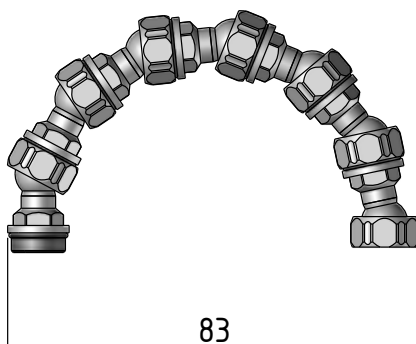
### GA-9.5-M8x1

Gewindeanschluss M8x1  
Threaded connector M8x1



### GA-9.5-M10x1

Gewindeanschluss M10x1  
Threaded connector M10x1



## Kugelanschlüsse Ball connector

### KA-10-20

Kugelpkopfadapter Ø 10 mm inkl.  
Klemmring - 20 mm lang - für 1/8" System  
Ball socket connector Ø 10 mm incl.  
clamping ring - 20 mm long - for 1/8" System



### KA-12-20

Kugelpkopfadapter Ø 12 mm inkl.  
Klemmring - 20 mm lang - für 1/8" System  
Ball socket connector Ø 12 mm incl.  
clamping ring - 20 mm long - for 1/8" System



## Distanzstücke Spacer

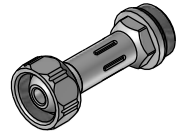
### D-9.5-20

Distanzstück 20 mm  
Spacer 20 mm



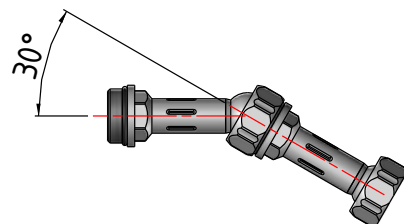
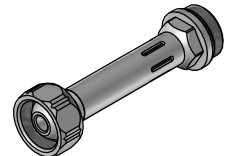
### D-9.5-32

Distanzstück 32.5 mm  
Spacer 32.5 mm



### D-9.5-45

Distanzstück 45 mm  
Spacer 45 mm



## Düsen Nozzle

### RD-9.5-1

Rund-Düse Ø 1.0 mm  
Round nozzle Ø 1.0 mm



### RD-9.5-2

Rund-Düse Ø 2.0 mm  
Round nozzle Ø 2.0 mm



### RD-9.5-3.4

Rund-Düse Ø 3.4 mm  
Round nozzle Ø 3.4 mm



### RD-9.5-5/1.0

Rund-Düse Mehrloch 5x Ø 1.0 mm  
Round nozzle multihole 5x Ø 1.0 mm



### SDK-9.5/60°

Spez-Düse 60° kurz  
Special nozzle 60° short



### SDL-9.5/60°

Spez-Düse 60° lang  
Special nozzle 60° long



### SDK-9.5/90°

Spez-Düse 90° kurz  
Special nozzle 90° short



### SDL-9.5/90°

Spez-Düse 90° lang  
Special nozzle 90° long



## Zubehör Accessories

### M-SW13

Mutter SW13  
Nut AF13



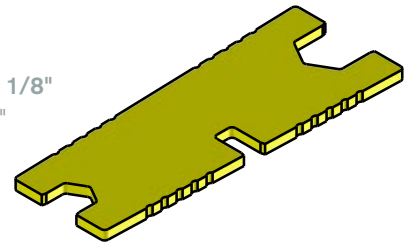
### Ring 9.5

O-Ring 1/8"  
O-ring 1/8"



### S-9/13

Sechskantschlüssel 1/8"  
Hexagon wrench 1/8"



## Winkelemente Elbows

### L-1/8"

90° Winkelstück  
90° elbow



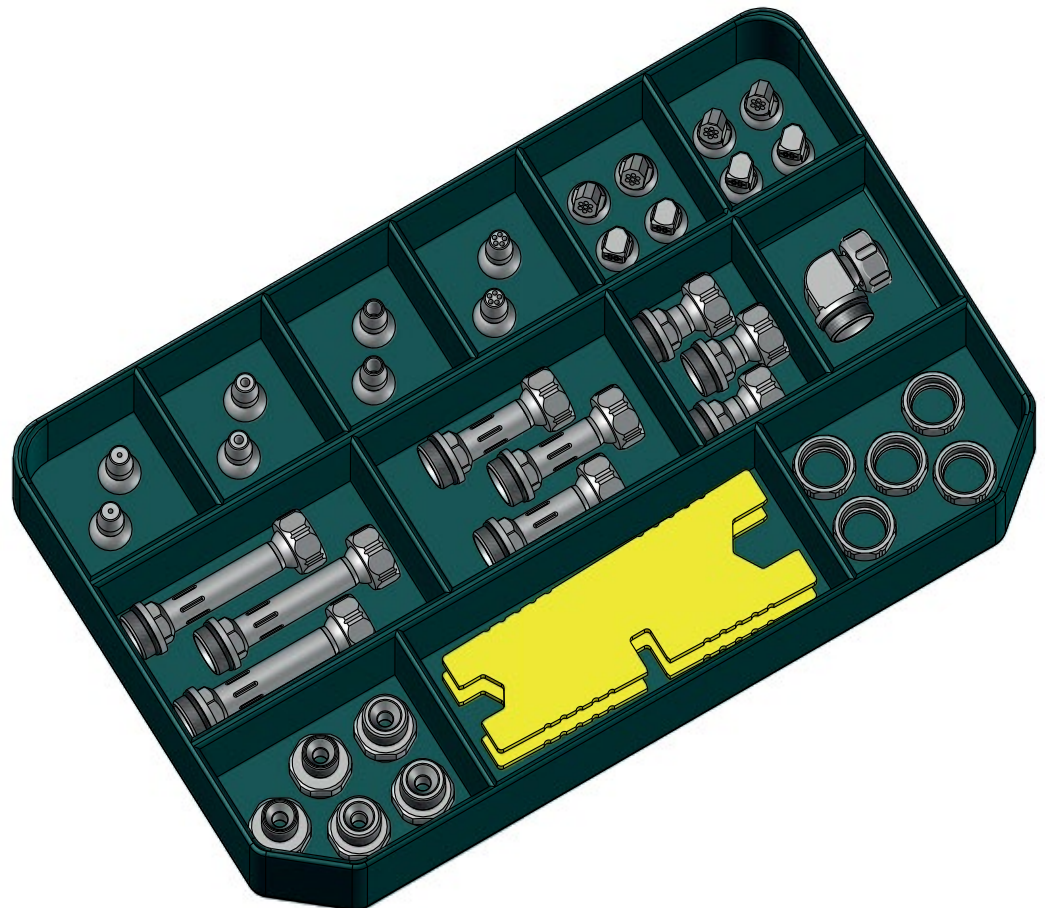
# Set Set

## PCL-1/8" SET 1

### Cooling Line Starterkit 1/8"

Cooling Line Starterkit 1/8" Inhalt:  
Cooling Line starter kit 1/8" content:

- 2 x RD-9.5-1
- 2 x RD-9.5-2
- 2 x RD-9.5-3.4
- 2 x RD-9.5-5/1.0
- 2 x SDK-9.5/60°
- 2 x SDK-9.5/90°
- 2 x SDL-9.5/60°
- 2 x SDL-9.5/90°
- 3 x D-9.5/20
- 3 x D-9.5/32
- 3 x D-9.5/45
- 1 x L-1/8"
- 1 x GA-9.5-1/8"
- 1 x GA-9.5-1/8" NPT
- 1 x GA-9.5-M8
- 1 x GA-9.5-M8x1
- 1 x GA-9.5-M10x1
- 2 x S-9/13
- 5 x M-SW13



FOR HIGH  
PRESSURE  
80 BAR

## Gewindeanschlüsse Threaded connector

### GA-1/8"

Gewindeanschluss 1/8" G  
Threaded connector 1/8" G



### GA-1/8" NPT

Gewindeanschluss 1/8" NPT  
Threaded connector 1/8" NPT



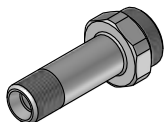
### GA-R 1/8"

Gewindeanschluss 1/8" R  
Threaded connector 1/8" R



### GA-R1/8"-L

Gewindeanschluss R1/8" lang  
Threaded connector R1/8" long



### GA-1/4"

Gewindeanschluss 1/4"  
Threaded connector 1/4"



### GA-1/4" NPT

Gewindeanschluss 1/4" NPT  
Threaded connector 1/4" NPT



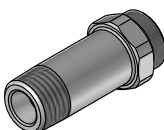
### GA-R 1/4"

Gewindeanschluss 1/4" R  
Threaded connector 1/4" R



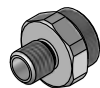
### GA-R1/4"-L

Gewindeanschluss GA-R1/4" lang  
Threaded connector GA-R1/4" long



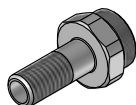
### GA-M8

Gewindeanschluss M8  
Threaded connector M8



### GA-M8-L

Gewindeanschluss M8 lang  
Threaded connector M8 long



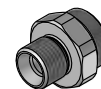
### GA-M10

Gewindeanschluss M10  
Threaded connector M10



### GA-M10x1

Gewindeanschluss M10x1  
Threaded connector M10x1



### GA-M12x1

Gewindeanschluss M12x1  
Threaded connector M12x1



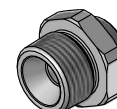
### GA-3/8" -1/4"

Gewindeanschluss 3/8" G  
mit Reduktion auf 1/4" System  
Threaded connector 3/8" G  
with reduction to 1/4" system



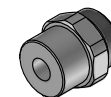
### GA-3/8" R -1/4"

Gewindeanschluss 3/8" R  
mit Reduktion auf 1/4" System  
Threaded connector 3/8" R  
with reduction to 1/4" system



### GA-R

Gewindeanschluss Rohling Ø 14 mm zur  
Fertigung von kundenspezifischem Gewinde  
Threaded connector blank Ø 14 mm for  
production of customized thread



# Kugelanschlüsse

## Ball connector

### KA-12-28

Kugelpkopfadapter Ø 12 mm inkl. Klemmring  
28 mm lang - für 1/4" System  
Ball socket connector Ø 12 mm incl.  
clamping ring - 28 mm long - for 1/4" System



### KA-14-28

Kugelpkopfadapter Ø 14 mm inkl. Klemmring  
28 mm lang - für 1/4" System  
Ball socket connector Ø 14 mm incl.  
clamping ring - 28 mm long - for 1/4" System



### KA-15-28

Kugelpkopfadapter Ø 15 mm inkl. Klemmring  
28 mm lang - für 1/4" System  
Ball socket connector Ø 15 mm incl.  
clamping ring - 28 mm long - for 1/4" System



### R-12

Klemmring Ø 12 mm  
Clamping ring Ø 12 mm



### SDK-1260

Spez-Düse 60° kurz - Kugel Ø 12 mm  
Special nozzle 60° short - ball Ø 12 mm



### SDL-1260

Spez-Düse 60° lang - Kugel Ø 12 mm  
Special nozzle 60° long - ball Ø 12 mm



### R-12.5

Klemmring Ø 12.5 mm  
Anwendbar mit Standard 1/4" Düsen  
Clamping ring Ø 12.5 mm  
Applicable with standard 1/4" nozzles



### R-14

Klemmring Ø 14 mm  
Clamping ring Ø 14 mm



### SDK-1460

Spez-Düse 60° kurz - Kugel Ø 14 mm  
Special nozzle 60° short - ball Ø 14 mm



### SDL-1460

Spez-Düse 60° lang - Kugel Ø 14 mm  
Special nozzle 60° long - ball Ø 14 mm



### RDK-14715

Rund-Düse Mehrloch - Kugel Ø 14 mm  
Round nozzle multihole - ball Ø 14 mm



### R-15

Klemmring Ø 15 mm  
Clamping ring Ø 15 mm



### SDK-1560

Spez-Düse 60° kurz - Kugel Ø 15 mm  
Special nozzle 60° short - ball Ø 15 mm



### SDL-1560

Spez-Düse 60° lang - Kugel Ø 15 mm  
Special nozzle 60° long - ball Ø 15 mm



### RDK-15715

Rund-Düse Mehrloch - Kugel Ø 15 mm  
Round nozzle multihole - ball Ø 15 mm



## Distanzstücke Spacer

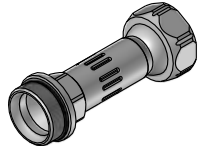
### D-12.5/28

Distanzstück 28 mm  
Spacer 28 mm



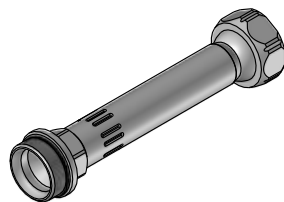
### D-12.5/43

Distanzstück 43 mm  
Spacer 43 mm



### D-12.5/70

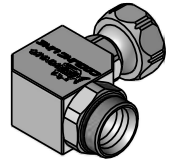
Distanzstück 70 mm  
Spacer 70 mm



## Winkelemente Elbows

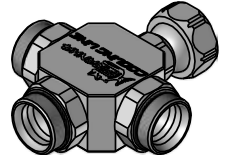
### L-12.5

90°-Winkelstück  
90° elbow



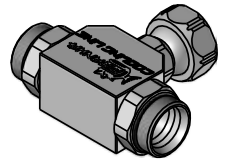
### Quatro-12.5

Quatro-Verteilerblock  
Quatro distribution block



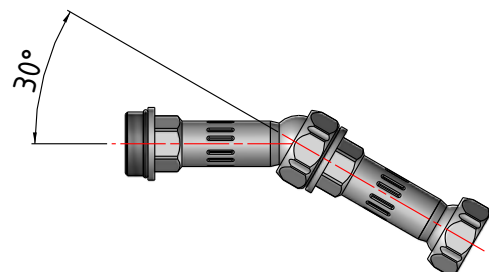
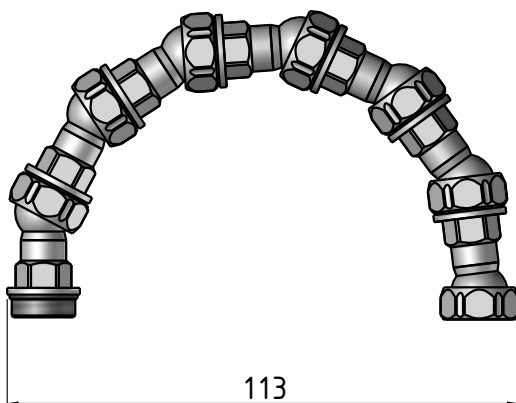
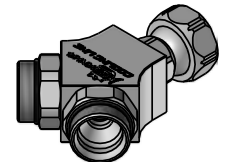
### T-12.5

T-Verteilerstück  
T-distributor



### Y-12.5

Y-Verteilerstück  
Y-distributor





## Düsen Nozzle

### RD-12.5-1.5

Rund-Düse Ø 1.5 mm  
Round nozzle Ø 1.5 mm



### RD-12.5-3.5

Rund-Düse Ø 3.5 mm  
Round nozzle Ø 3.5 mm



### RD-12.5-4.5

Rund-Düse Ø 4.5 mm  
Round nozzle Ø 4.5 mm



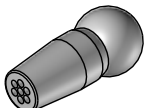
### RD-12.5-5.5

Rund-Düse Ø 5.5 mm  
Round nozzle Ø 5.5 mm



### RD-12.5-7/1.5

Rund-Düse Mehrloch 7x Ø 1.5 mm  
Round nozzle multihole 7x Ø 1.5 mm



### RD-12.5-3/2

Rund-Düse 3x Ø 2.0 mm  
Round nozzle 3x Ø 2.0 mm



### RD-12.5-4/1.5

Rund-Düse 4x Ø 1.5 mm  
Round nozzle 4x Ø 1.5 mm



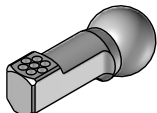
### SDK-12.5/90°

Spez-Düse 90° kurz  
Special nozzle 90° short



### SDL-12.5/90°

Spez-Düse 90° lang  
Special nozzle 90° long



### SDK-12.5/60°

Spez-Düse 60° kurz  
Special nozzle 60° short



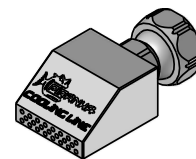
### SDL-12.5/60°

Spez-Düse 60° lang  
Special nozzle 60° long



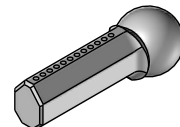
### FD-12.5-20

Flachdüse 20 mm  
Flat nozzle 20 mm



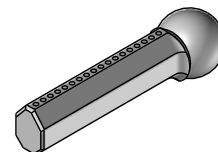
### LDK-12.5-12x1

Längsdüse kurz 12x Ø 1 mm  
Diagonal nozzle short 12x Ø 1 mm



### LDL-12.5-18x1

Längsdüse lang 18x Ø 1 mm  
Diagonal nozzle long 18x Ø 1 mm



## Zubehör Accessories

### M-SW16

Mutter SW16  
Nut AF16



### D-SW16

Verschluss-Deckel SW16  
Cap AF16



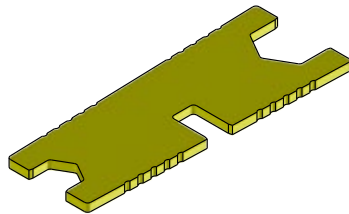
### Ring 12.5

O-Ring 1/4"  
O-ring 1/4"



### S-11/16

Sechskantschlüssel 1/4"  
Hexagon wrench 1/4"



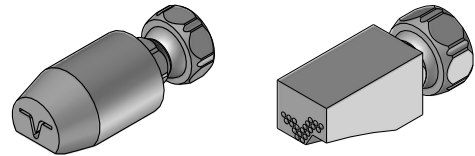
### H-12.5

Kugelhahn 1/4"  
Ball valve 1/4"



## Spezialanfertigung Customized products

Können nach Kundenwunsch produziert werden.  
Can be produced by request.



## Sets

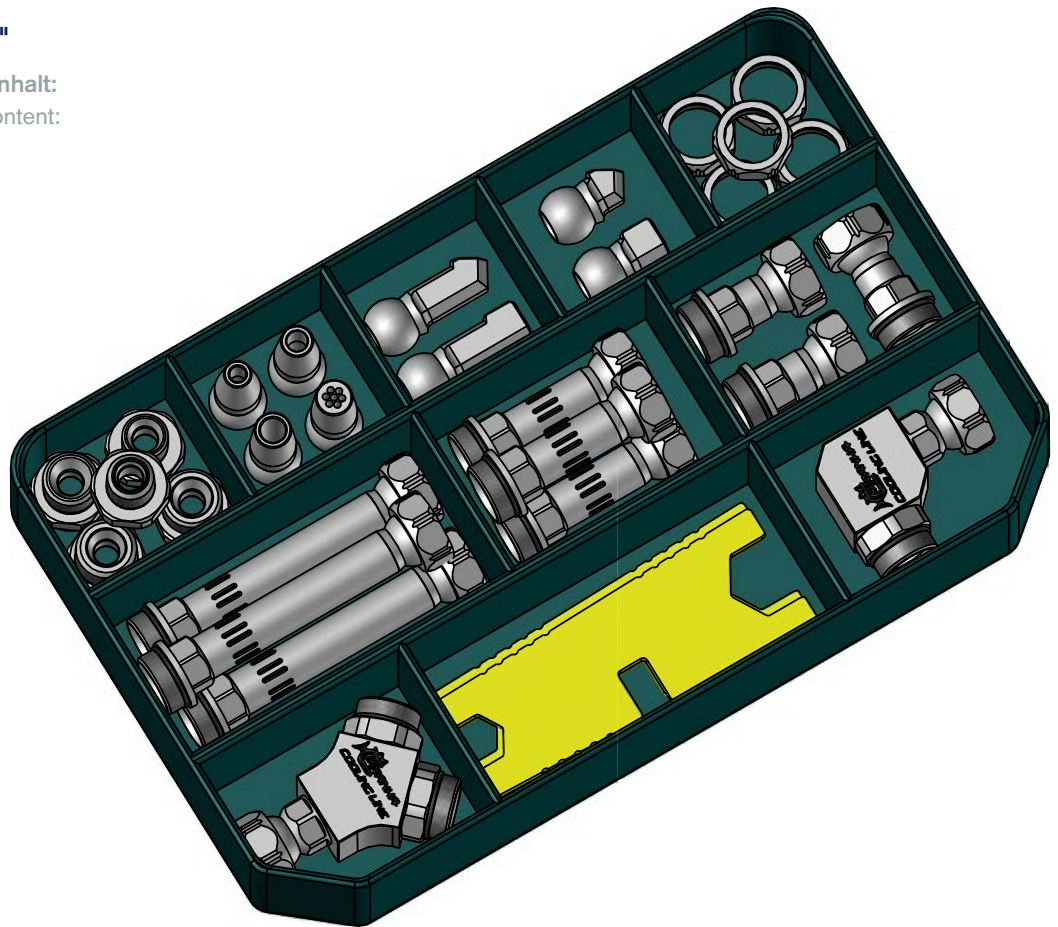
### Sets

#### PCL-1/4 SET 1

##### Cooling Line Starterkit 1/4"

Cooling Line Starterkit 1/4" Inhalt:  
Cooling Line starter kit 1/4" content:

- 1 x GA-1/4"
- 1 x GA-1/4" NPT
- 1 x GA-1/8" NPT
- 1 x GA-M10x1
- 1 x GA-M12x1
- 1 x RD-12.5-3.5
- 1 x RD-12.5-4.5
- 1 x RD-12.5-5.5
- 1 x RD-12.5-7/1.5
- 1 x SDL-12.5/60°
- 1 x SDL-12.5/90°
- 1 x SDK-12.5/60°
- 1 x SDK-12.5/90°
- 5 x M-SW16
- 3 x D-12.5/28
- 3 x D-12.5/43
- 3 x D-12.5/70
- 1 x Y-12.5
- 2 x S-11/16
- 1 x L-12.5



#### CR-12.5-8

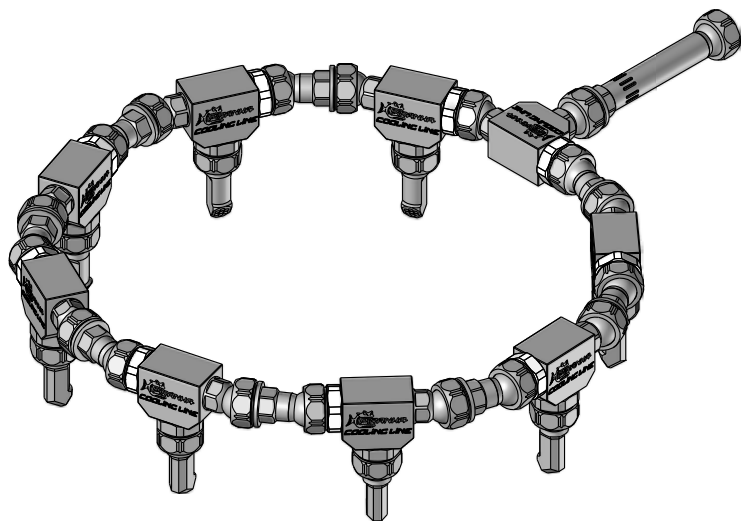
##### Cooling Ring mit 8 Düsen

Cooling ring with 8 nozzles

Zusammengestellt aus:

Composed by:

- 1 x D-12.5/70
- 9 x T-12.5 spezial
- 9 x D-12.5/28
- 8 x M-SW16
- 8 x SDL-12.5/60°

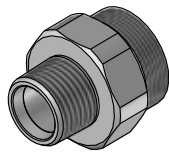


FOR HIGH  
PRESSURE  
80 BAR

## Gewindeanschlüsse Threaded connector

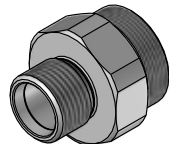
### GA-22-3/8" NPT

Gewindeanschluss 3/8" NPT  
Threaded connector 3/8" NPT



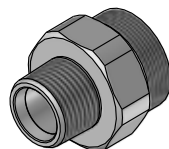
### GA-22-3/8"

Gewindeanschluss 3/8"  
Threaded connector 3/8"



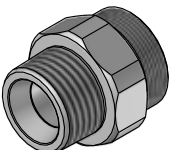
### GA-22-R-3/8"

Gewindeanschluss 3/8" R  
Threaded connector 3/8" R



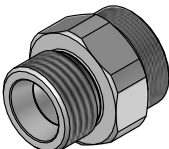
### GA-22-1/2" NPT

Gewindeanschluss 1/2" NPT  
Threaded connector 1/2" NPT



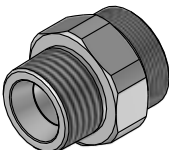
### GA-22-1/2"

Gewindeanschluss 1/2" G  
Threaded connector 1/2" G



### GA-22-R 1/2"

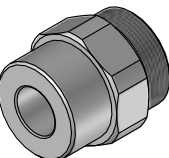
Gewindeanschluss 1/2" R  
Threaded connector 1/2" R



### GA-R-22

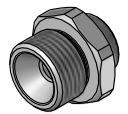
Gewindeanschluss Rohling Ø 24 mm  
zur Fertigung von kundenspezifischem  
Gewinde

Threaded connector blank Ø 24 mm for  
production of customized thread



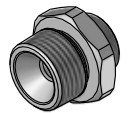
### GA-3/8" -1/4"

Gewindeanschluss 3/8" G mit  
Reduktion auf 1/4" System  
Threaded connector 3/8" G with  
reduction to 1/4" system



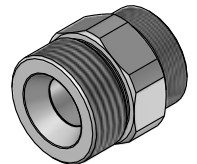
### GA-3/8" R -1/4"

Gewindeanschluss 3/8" R mit  
Reduktion auf 1/4" System  
Threaded connector 3/8" R with  
reduction to 1/4" system



### GA-3/4"-1/2"

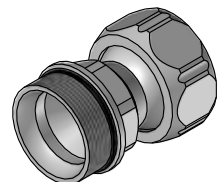
Gewindeanschluss 3/4" G mit  
Reduktion auf 1/2" System  
Threaded connector 3/4" G with  
reduction to 1/2" system



## Distanzstücke Spacer

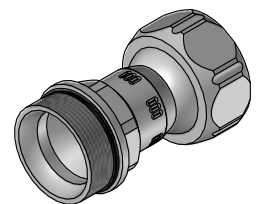
### D-22-38

Distanzstück 38 mm  
Spacer 38 mm



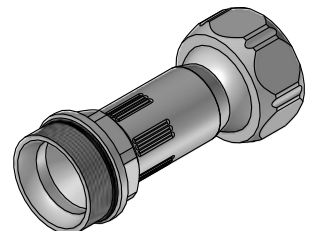
### D-22-46

Distanzstück 46.5 mm  
Spacer 46.5 mm



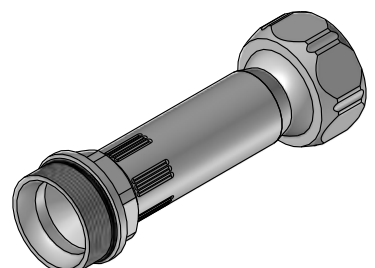
### D-22-63

Distanzstück 63.5 mm  
Spacer 63.5 mm



### D-22-80

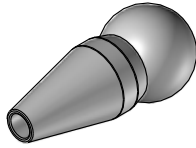
Distanzstück 80 mm  
Spacer 80 mm



## Düsen Nozzle

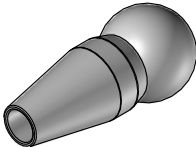
### RD-22-6

Rund-Düse Ø 6 mm  
Round nozzle Ø 6 mm



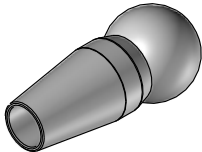
### RD-22-8

Rund-Düse Ø 8 mm  
Round nozzle Ø 8 mm



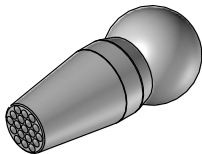
### RD-22-10

Rund-Düse Ø 10 mm  
Round nozzle Ø 10 mm



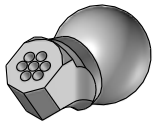
### RD-22-12-19.2

Rund-Düse Mehrloch 19x Ø 2 mm  
Round nozzle multihole 19x Ø 2 mm



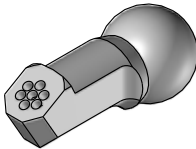
### SDK-22/60°

Spez-Düse 60° kurz  
Special nozzle 60° short



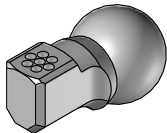
### SDL-22/60°

Spez-Düse 60° lang  
Special nozzle 60° long



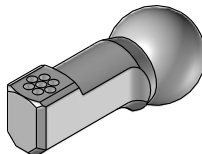
### SDK-22/90°

Spez-Düse 90° kurz  
Special nozzle 90° short



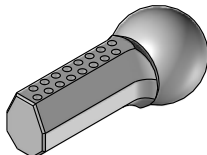
### SDL-22/90°

Spez-Düse 90° lang  
Special nozzle 90° long



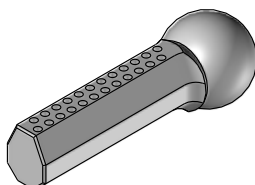
### LDK-22-16x2

Längsdüse kurz 16x Ø 2 mm  
Diagonal nozzle short 16x Ø 2 mm



### LDL-22-24x2

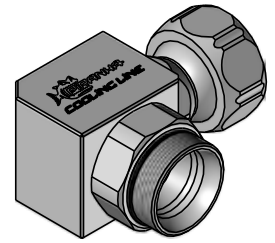
Längsdüse lang 24x Ø 2 mm  
Diagonal nozzle long 24x Ø 2 mm



## Winkelemente Elbows

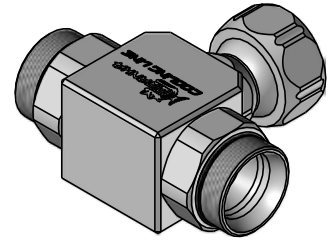
### L-1/2"

90°-Winkelstück  
90° elbow



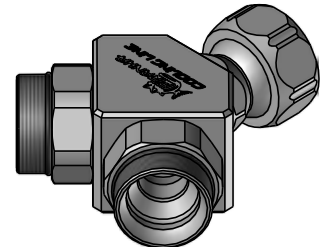
### T-1/2"

T-Verteilerstück  
T-distributor



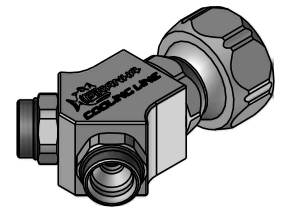
### Y-1/2"

Y-Verteilerstück  
Y-distributor



### Y-1/2"-1/4"

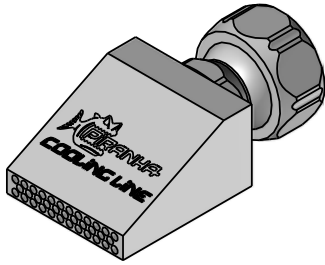
Y-Verteilerstück  
Y-distributor



## Flachdüsen Flat nozzle

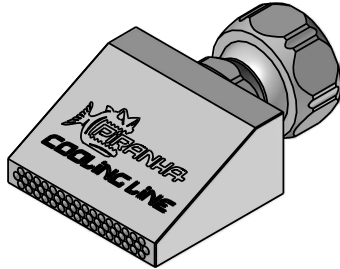
### FD-22-30

Flachdüse 30 mm  
Flat nozzle 30 mm



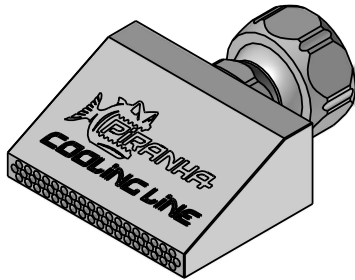
### FD-22-40

Flachdüse 40 mm  
Flat nozzle 40 mm



### FD-22-50

Flachdüse 50 mm  
Flat nozzle 50 mm



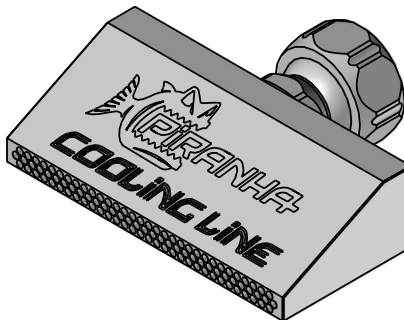
### FD-22-60

Flachdüse 60 mm  
Flat nozzle 60 mm



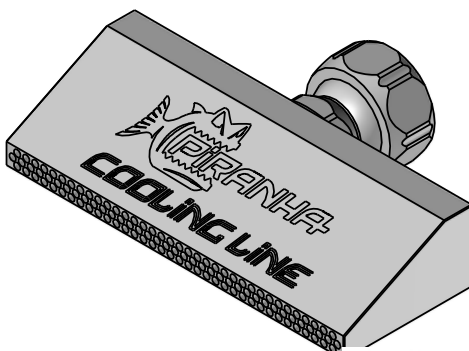
### FD-22-80

Flachdüse 80 mm  
Flat nozzle 80 mm



### FD-22-100

Flachdüse  
100 mm  
Flat nozzle  
100 mm



## Zubehör Accessories

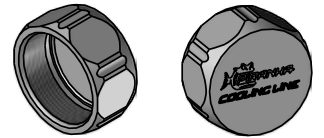
### M-SW27

Mutter SW27  
Nut AF27



### D-SW27

Verschluss-Deckel SW27  
Cap AF27



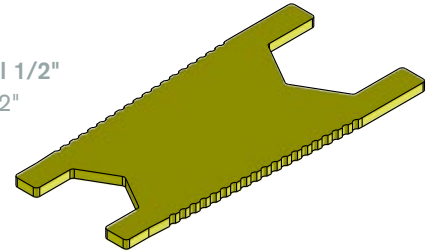
### Ring 22

O-Ring 1/2"  
O-ring 1/2"



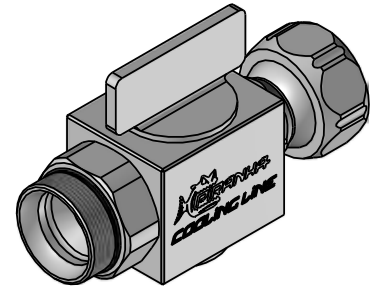
### S-21/27

Sechskantschlüssel 1/2"  
Hexagon Wrench 1/2"



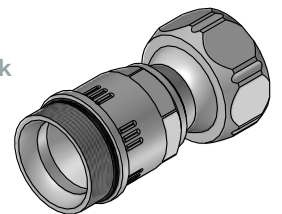
### H-22

Kugelhahn 1/2"  
Ball valve 1/2"



### RVD-22

Rückschlagventil im Distanzstück  
Check valve integrated in spacer

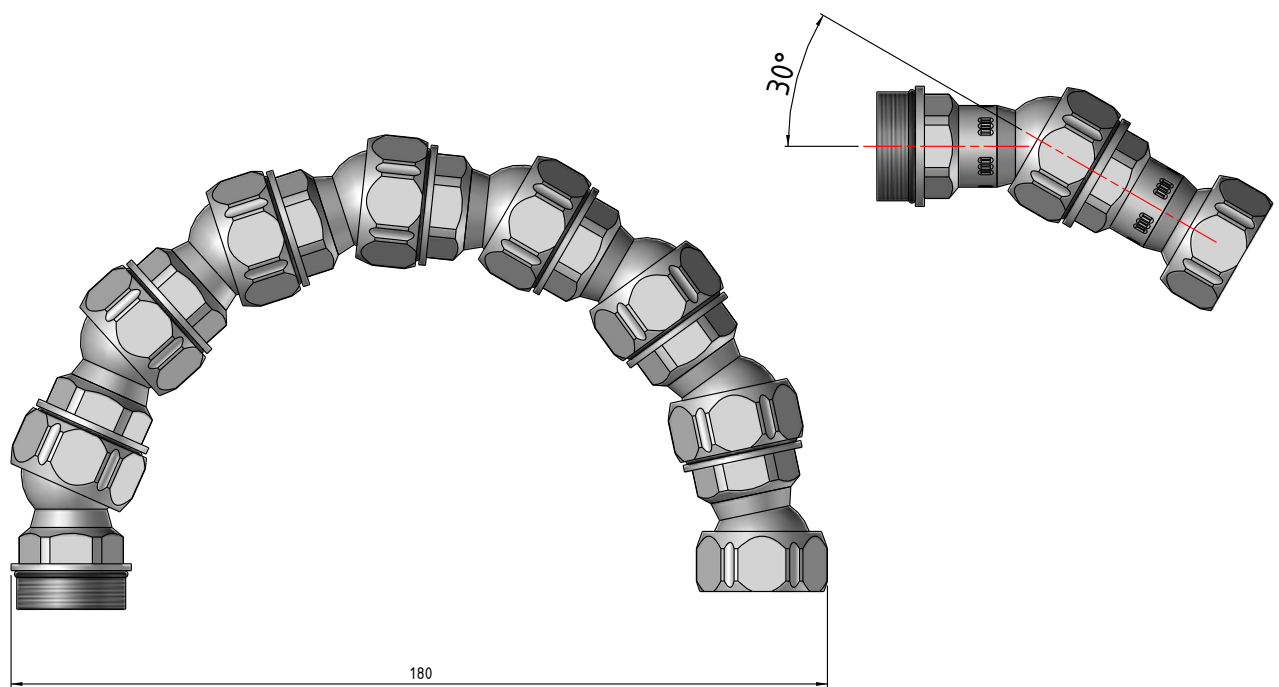
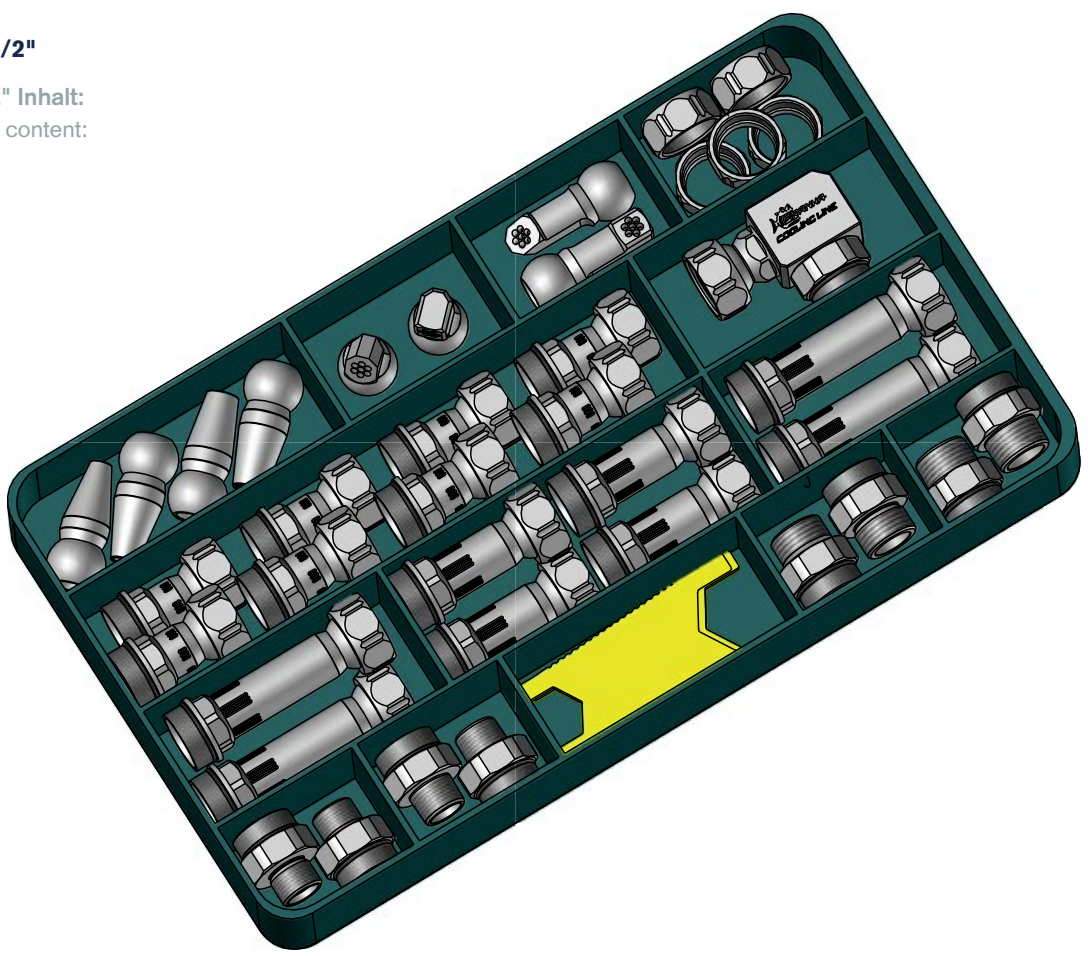


# Set Set

## PCL-1/2" SET 1 Cooling Line Starterkit 1/2"

Cooling Line Starterkit 1/2" Inhalt:  
Cooling Line starter kit 1/2" content:

- 1 x RD-22-6
- 1 x RD-22-8
- 1 x RD-22-10
- 1 x RD-22-12-19.2
- 1 x SDK-22/60
- 1 x SDK-22/90
- 1 x SDL-22/60
- 1 x SDL-22/90
- 5 x M-SW27
- 8 x D-22-46
- 1 x L-1/2"
- 4 x D-22-63
- 4 x D-22-80
- 2 x GA-22-1/2"
- 2 x GA-22-1/2" NPT
- 2 x GA-22-3/8"
- 2 x GA-22-3/8" NPT
- 2 x S-21/27





Klostermatt 14 · CH-6330 Cham  
Telefon: +41 41 780 17 88  
info@piranha-clamp.com · www.piranha-clamp.com



Abbildungen können vom Original abweichen. Änderungen jederzeit ohne Vorankündigung vorbehalten. Jede Nachbildung des Produktes, gleich ob ganz oder teilweise, sowie der zugehörigen Technologien ist untersagt. Piranha Cooling Line® ist ein registrierter Name. Technische Änderungen und Irrtümer vorbehalten.  
All illustrations are for reference only. The datas are subject to change. A copy of the product, whether in whole or in part, and the related technologies is prohibited.  
Piranha Cooling Line® is a registered name. Technical amendments and errors may occur.